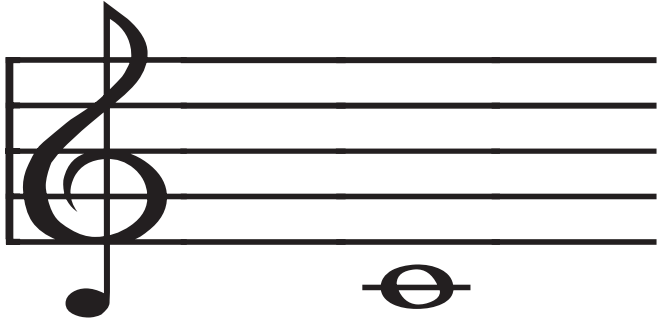


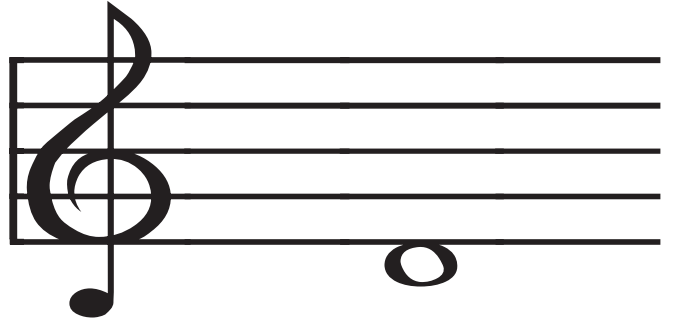
Treblemakers Piano Method

suzanstroud.com



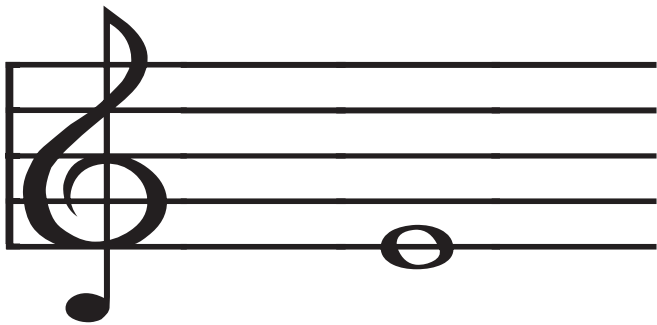
Treblemakers Piano Method

suzanstroud.com



Treblemakers Piano Method

suzanstroud.com



Treblemakers Piano Method

suzanstroud.com



Treblemakers Piano Method

suzanstroud.com



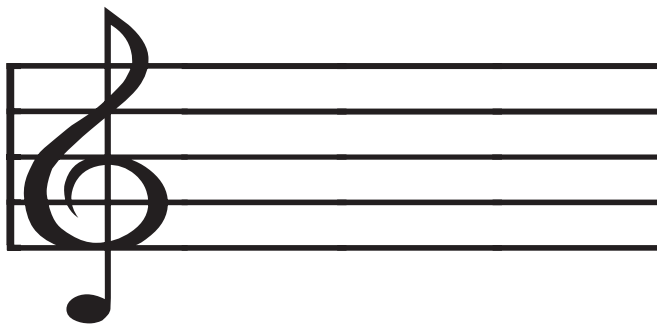
Treblemakers Piano Method

suzanstroud.com



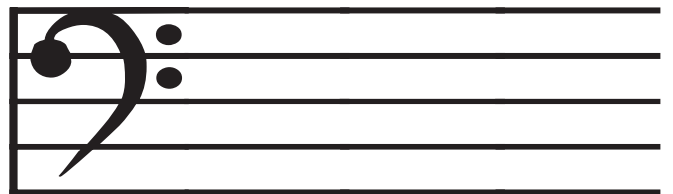
Treblemakers Piano Method

suzanstroud.com



Treblemakers Piano Method

suzanstroud.com



**D**

**Middle C**

2

1

**Whole Note**  
4 counts

**E**

4

3

**Half Note**  
2 counts

**Quarter Note**  
1 count

6

5

**Bass Clef or F Clef**  
lower part of piano  
called F Clef because the two dots  
surround the F line

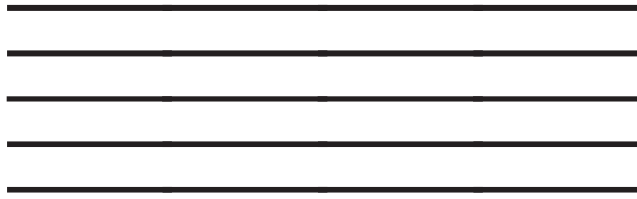
**Treble Clef or G Clef**  
higher part of piano  
called G Clef because it curls into the  
G line

8

7

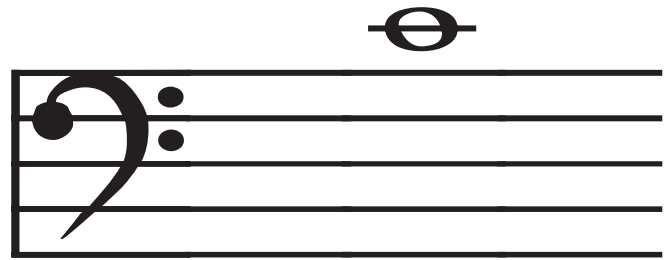
Treblemakers Piano Method

suzanstroud.com



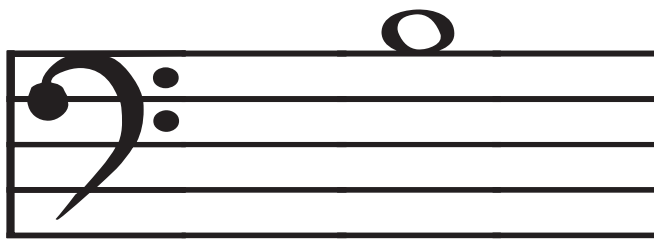
Treblemakers Piano Method

suzanstroud.com



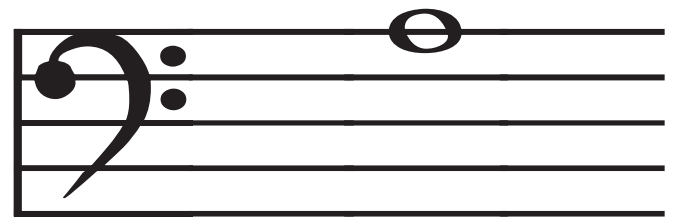
Treblemakers Piano Method

suzanstroud.com



Treblemakers Piano Method

suzanstroud.com



Treblemakers Piano Method

suzanstroud.com



Treblemakers Piano Method

suzanstroud.com



Treblemakers Piano Method

suzanstroud.com



Treblemakers Piano Method

suzanstroud.com



**C**

**Staff**

10

9

**A**

**B**

12

11

**Dotted Half Note**  
**3 counts**

**Eighth Note**  
**1/2 a count**

14

13

**Dotted Quarter Note**  
**1 1/2 counts**

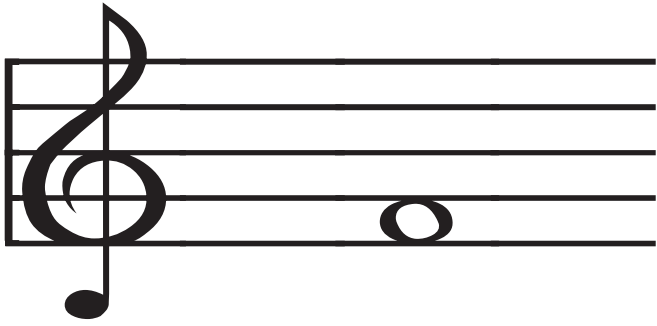
**Quarter Rest**  
**1 count of silence**

16

15

Treblemakers Piano Method

suzanstroud.com



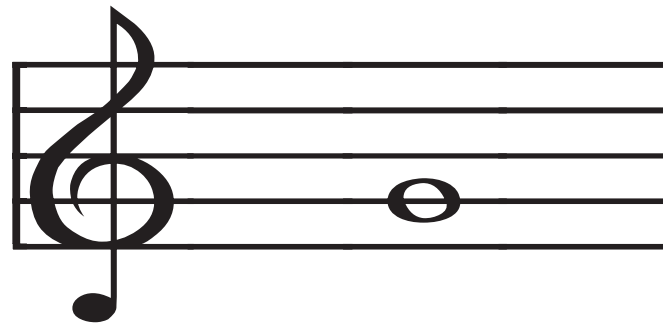
Treblemakers Piano Method

suzanstroud.com



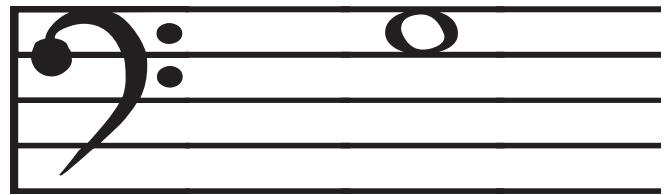
Treblemakers Piano Method

suzanstroud.com



Treblemakers Piano Method

suzanstroud.com



Treblemakers Piano Method

suzanstroud.com



Treblemakers Piano Method

suzanstroud.com



Treblemakers Piano Method

suzanstroud.com



Treblemakers Piano Method

suzanstroud.com



**F**

18

**F**

17

**G**

20

**G**

19

**Sixteenth Note**  
**1/4 of a count**

22

**Eighth Rest**  
**1/2 of a count**  
**of silence**

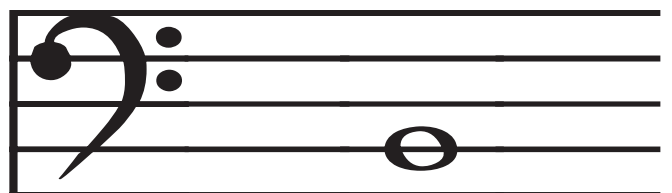
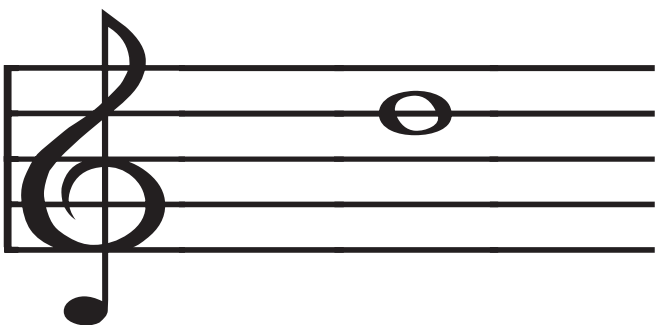
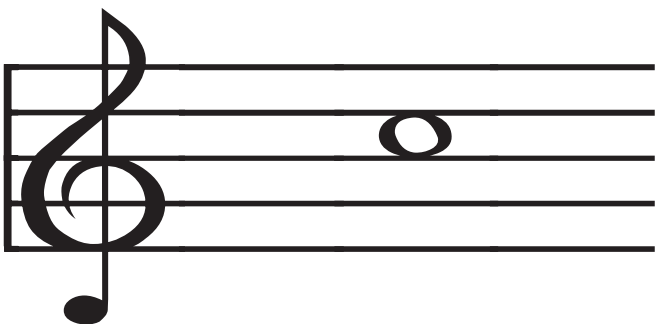
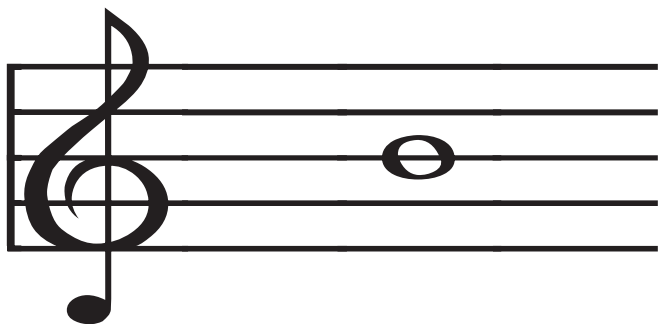
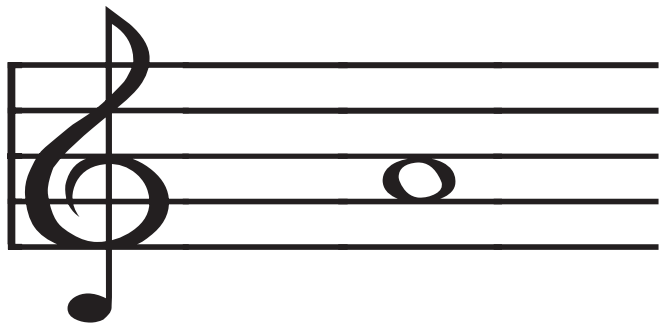
21

**Half Rest**  
**2 counts of silence**

24

**Whole Rest**  
**4 counts of silence**

23



**E**

**A**

26

25

**D**

**B**

28

27

**medium-low C**

**medium-high C**

30

29

**B**

**D**

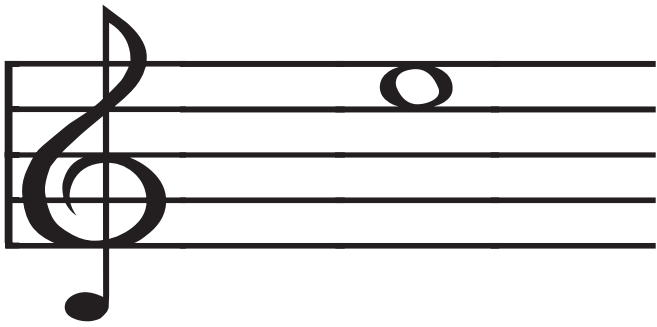
32

31



Treblemakers Piano Method

suzanstroud.com



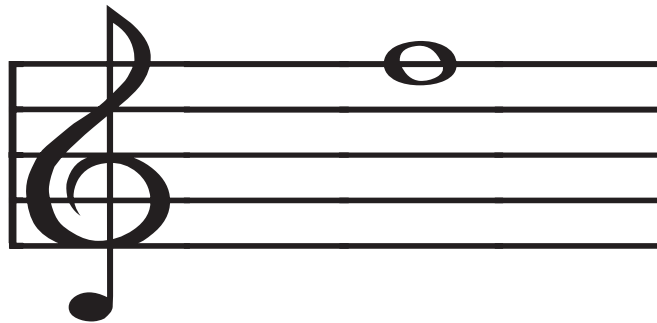
Treblemakers Piano Method

suzanstroud.com



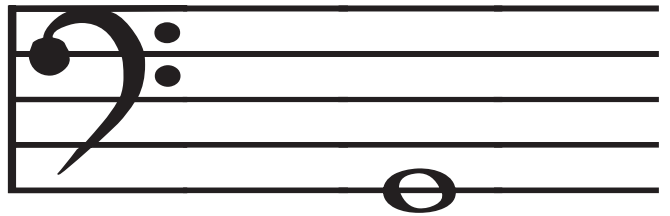
Treblemakers Piano Method

suzanstroud.com



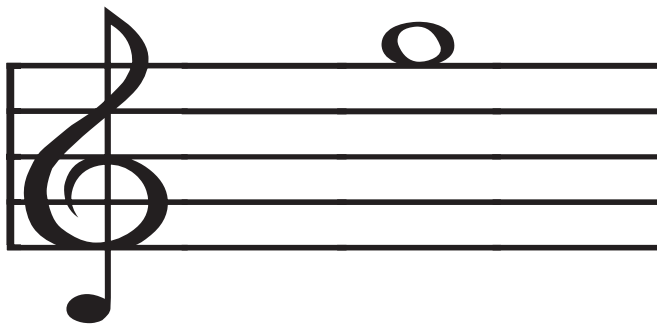
Treblemakers Piano Method

suzanstroud.com



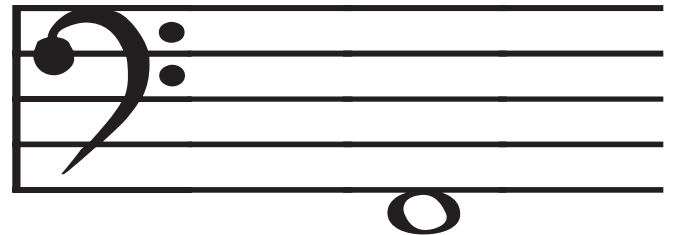
Treblemakers Piano Method

suzanstroud.com



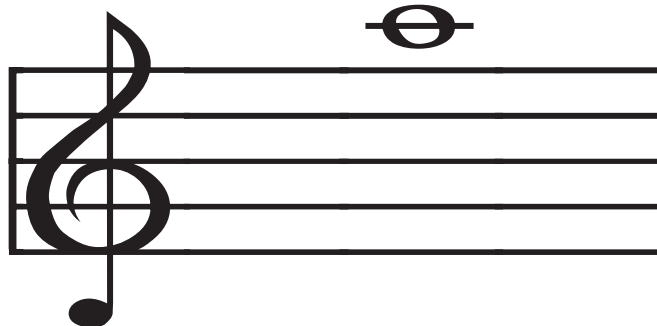
Treblemakers Piano Method

suzanstroud.com



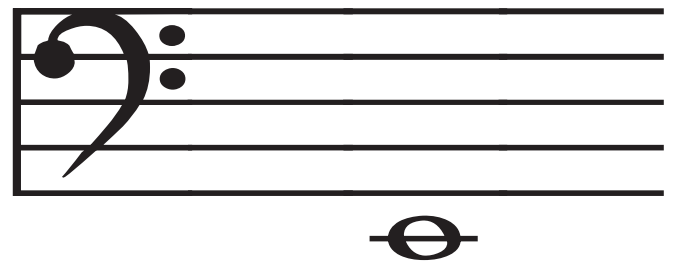
Treblemakers Piano Method

suzanstroud.com



Treblemakers Piano Method

suzanstroud.com



A

E

34

33

G

F

36

35

F

G

38

37

E

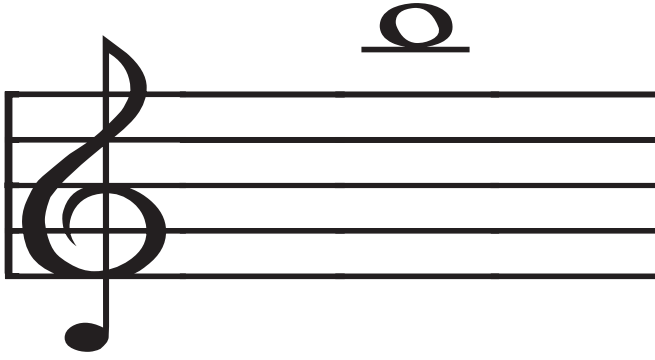
A

40

39

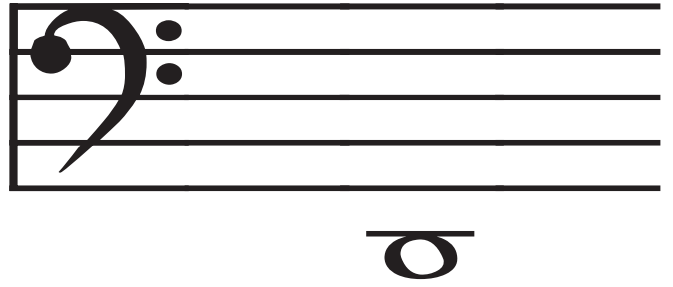
Treblemakers Piano Method

suzanstroud.com



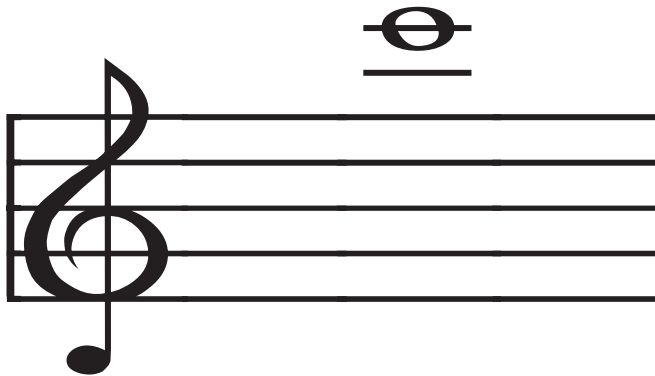
Treblemakers Piano Method

suzanstroud.com



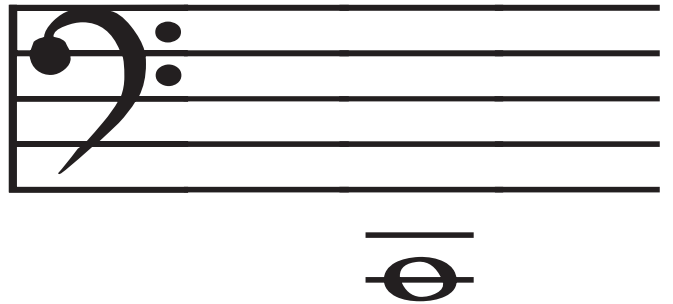
Treblemakers Piano Method

suzanstroud.com



Treblemakers Piano Method

suzanstroud.com



Treblemakers Piano Method

suzanstroud.com



Treblemakers Piano Method

suzanstroud.com



Treblemakers Piano Method

suzanstroud.com



Treblemakers Piano Method

suzanstroud.com



**D**

42

**B**

41

**Low C**

44

**High C**

43

**Sharp**

raises note by  $1/2$  step

46

**Flat**

lowers note by  $1/2$  step

45

**Sixteenth Rest**

$1/4$  of a count of silence

48

**Natural**

takes away sharp or flat

47