

MAJOR SCALE EXPLAINED

MAJOR SCALE FORMULA: W W ½ W W W ½ (W=whole step 1/2 = half step)

- Although there are different types of scales, the major scale is used most of the time.

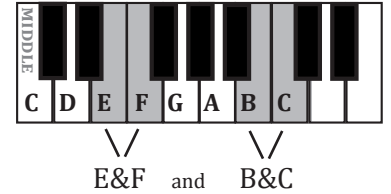
SCALES

SCALE: A group of notes stepping up or down by a specific formula of whole steps and half steps.

FORMULA: A recipe that lists the ingredients, measurements and instructions on how to make something.

HALF STEP: The smallest interval (distance) between two keys.

- Usually between a black key and a white key.
- Except, for the **two places** where there are **two white keys in a row**, between:



WHOLE STEP: Made up of two half steps.

C MAJOR SCALE SHOWS FORMULA

It's easy to see the formula with **C MAJOR SCALE** since:

- C major scale only has white keys
- The half steps are at the only two places with no black keys inbetween.

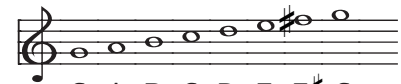


C D E F G A B C
W W 1/2 W W W 1/2

BUILDING G MAJOR SCALE USING FORMULA

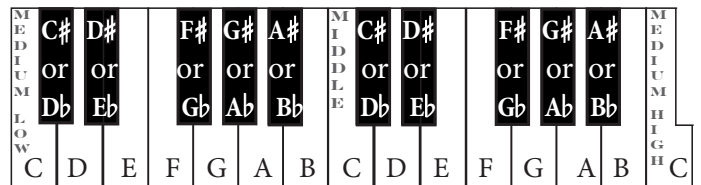
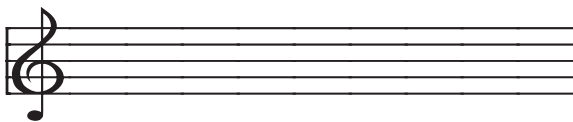
G MAJOR SCALE:

- w • Between G & A -already a whole step/do nothing.
- w • Between A & B-already a whole step/do nothing.
- 1/2 • Between B & C-already a 1/2 step/do nothing.
- w • Between C & D-already a whole step/do nothing.
- w • Between D & E-already a whole step/do nothing.
- w • Between E & F-only a half step/make F # for a whole step.
- 1/2 • Between F# & G-already a 1/2 step/do nothing.



G A B C D E F# G
W W 1/2 W W W 1/2

BUILD YOUR OWN SCALE:



1. Draw 1st note on the staff. (Whatever the scale is named is the 1st note.)
2. Draw a note on every line and space stepping up until there are eight notes.
3. Label the notes with their letter names. (One of each letter through alphabet until 1st note is reached again.)
4. Use sharps or flats to keep your scale formula. (# 's or b's go before the note and after the letter.)
(sharps = raise by a 1/2 step, flats = lower by a 1/2 step)